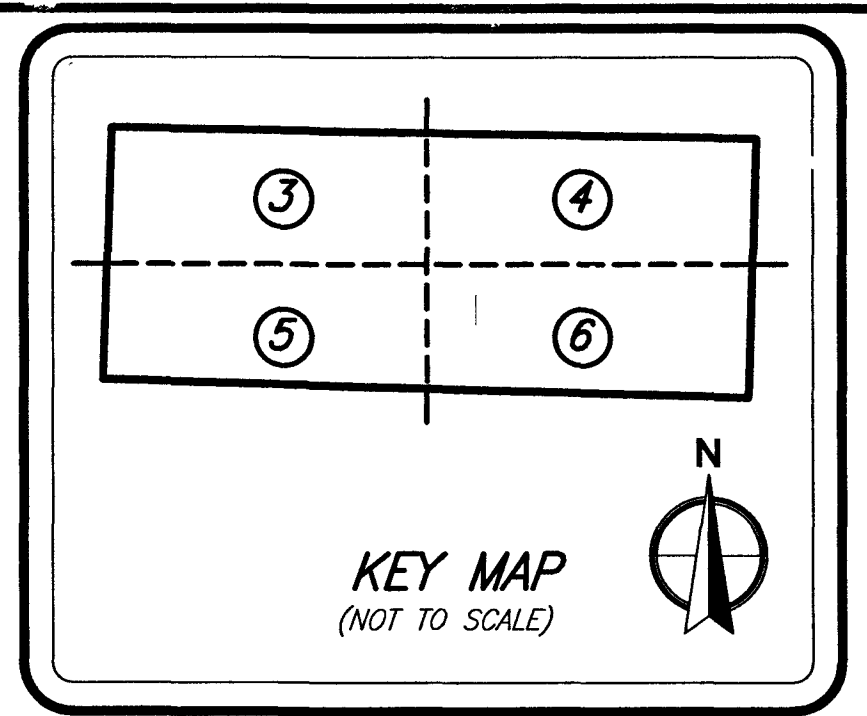


# VINTAGE OAKS T1

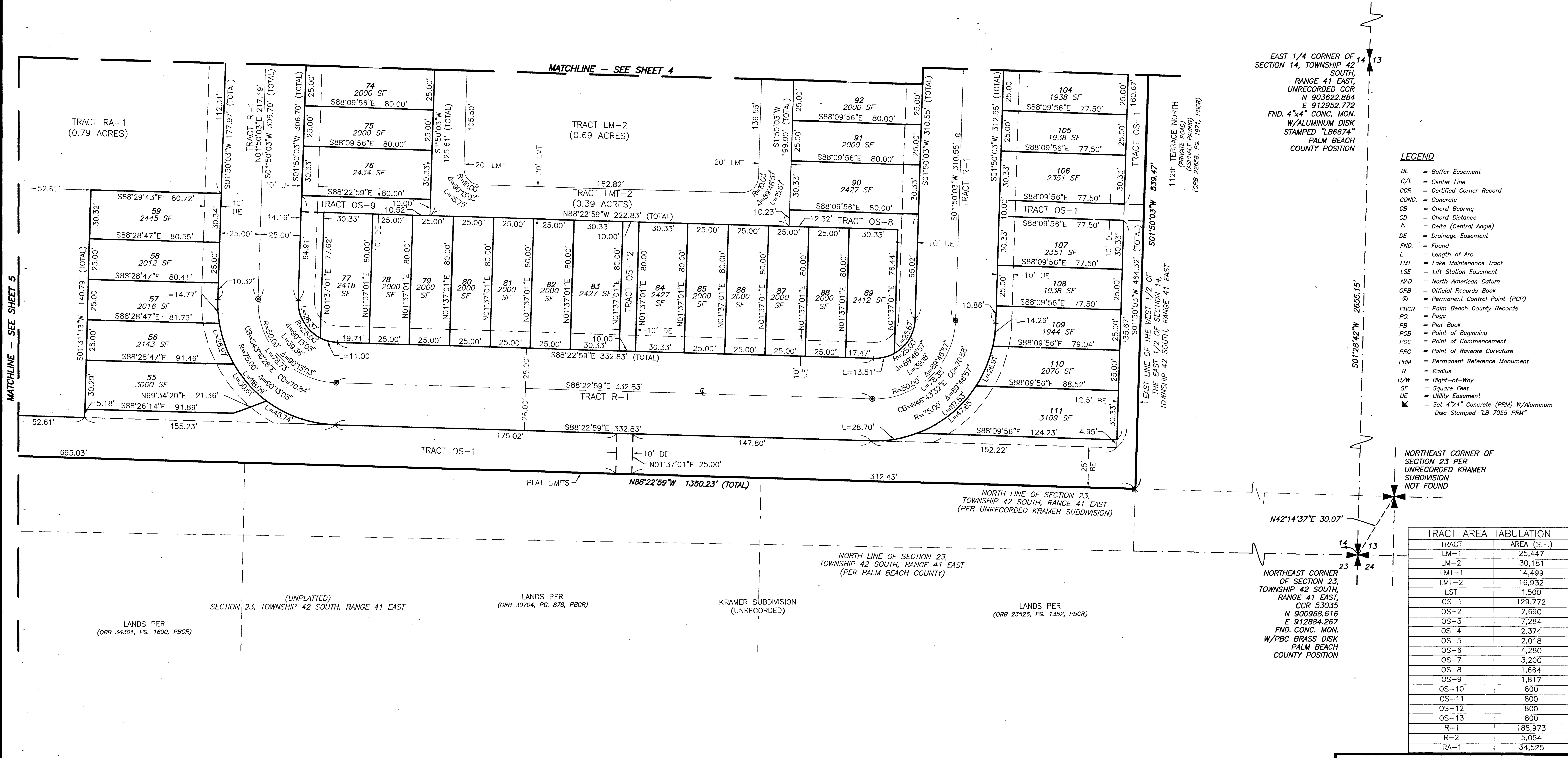
LOCATED IN SECTION 14, TOWNSHIP 42 SOUTH, RANGE 41 EAST  
CITY OF PALM BEACH GARDENS  
PALM BEACH COUNTY, FLORIDA

APRIL 2024



# 137

SHEET 6 OF 6 SHEETS



EAST 1/4 CORNER OF SECTION 14, TOWNSHIP 42 SOUTH, RANGE 41 EAST, UNRECORDED CCR N 903622.884 N 912952.772 E 912952.772 FND. 4"x4" CONC. MON. W/ALUMINUM DISK STAMPED "LB6674" PALM BEACH COUNTY POSITION

- LEGEND**
- BE = Buffer Easement
  - C/L = Center Line
  - CCR = Certified Corner Record
  - CONC. = Concrete
  - CB = Chord Bearing
  - CD = Chord Distance
  - Δ = Delta (Central Angle)
  - DE = Drainage Easement
  - FND. = Found
  - L = Length of Arc
  - LMT = Lake Maintenance Tract
  - LSE = Lift Station Easement
  - NAD = North American Datum
  - ORB = Official Records Book
  - ⊙ = Permanent Control Point (PCP)
  - PBCR = Palm Beach County Records
  - PG. = Page
  - PB = Plat Book
  - POB = Point of Beginning
  - POC = Point of Commencement
  - PRC = Point of Reverse Curvature
  - PRM = Permanent Reference Monument
  - R = Radius
  - R/W = Right-of-Way
  - SF = Square Feet
  - UE = Utility Easement
  - ⊠ = Set 4"x4" Concrete (PRM) W/Aluminum Disc Stamped "LB 7055 PRM"

TRACT AREA TABULATION	
TRACT	AREA (S.F.)
LM-1	25,447
LM-2	30,181
LMT-1	14,499
LMT-2	16,932
LST	1,500
OS-1	129,772
OS-2	2,690
OS-3	7,284
OS-4	2,374
OS-5	2,018
OS-6	4,280
OS-7	3,200
OS-8	1,664
OS-9	1,817
OS-10	800
OS-11	800
OS-12	800
OS-13	800
R-1	188,973
R-2	5,054
RA-1	34,525

**WGL**  
 2035 Vista Parkway, West Palm Beach, FL 33411  
 Phone No. 866.909.2220 www.wginc.com  
 Cert No. 6091 - LB No. 7055  
 THIS INSTRUMENT WAS PREPARED BY KELSEY M. SMITH  
 P.S.M., PROFESSIONAL SURVEYOR AND MAPPER,  
 LICENSE NO. 7096 FOR THE FIRM: WGI, INC.